



**THE ULTIMATE CHAIRSIDE  
CLASS II & CLASS III  
CORRECTION APPLIANCE**

 **DynaFlex®**

[www.dynaflex.com](http://www.dynaflex.com) | 866.346.5665



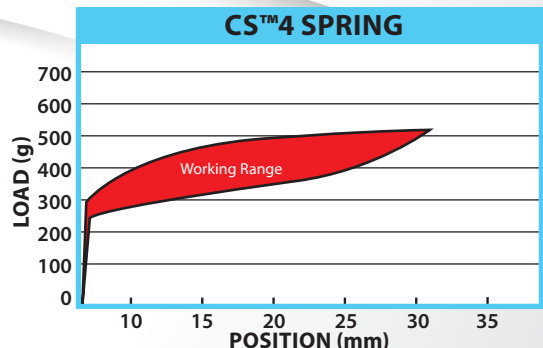
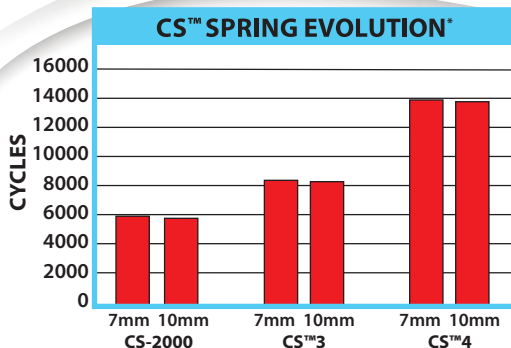


**40% Improvement**



The all new CS™4 is made from an exclusive nickel titanium material with specially built key-hole ends that improve the strength and durability by 40%. The new CS™4 spring will load force instantly and remain extremely consistent throughout treatment with the confidence of longer usage. The benefit is a smoother, more constant force that performs better and lasts longer. The CS™4 system is one of the most successful Class II and Class III chairside appliances used in the world due to its simplicity, effectiveness and value pricing as compared to other systems available today. The CS™4 is a major improvement to an already successful and widely used product. This is a must-have system for your orthodontic tool box.

## NEW DESIGN CREATES INSTANT LOADING AND MORE **CONSISTENT** FORCE LEVELS



*\*Test results were recorded during extremely abusive conditions.*



## What's Included: 5 Patient:

- 10 CS™4 NiTi Springs
- 20 Pivots (*SL or Traditional*)
- 20 Magnetic Hybrid Screws
- 1 Allen Pencil
- 1 Magnet
- 1 Self-Ligating Tool (*With SL Kit Only*)

## Master Kit:

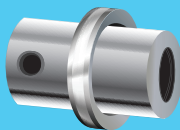
- 20 10mm CS™4 Springs
- 20 7mm CS™4 Springs
- 20 Self-Ligating Pivots
- 20 Traditional Pivots
- 40 Hybrid Screws
- 1 Allen Pencil
- 1 Magnet
- 1 Self-Ligating Tool



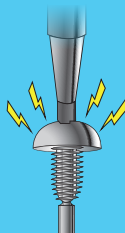
**CS4™  
SPRING**  
Instant Loading  
Constant Force



**SELF-LIGATING  
PIVOT**  
Reduce Chairtime  
Simple Installation



**TRADITIONAL  
PIVOT**  
Passive Or Active Usage  
Simple Installation



**MAGNETIC  
ALLEN PENCIL**  
Safer Placement  
Quick Installation

# YOUR CLASS II & CLASS III SOLUTION

This revolutionary system will guarantee results with your Class II and Class III orthodontic cases. The CS™4 Niti springs are a DynaFlex® exclusive, utilizing a patented, instant force (350 grams), closed coil spring and a specially built “key-hole” end which fits over our traditional and NEW SL patented pivot.

## TIPS FOR CLASS II TREATMENT

No more than 2mm of initial mandibular advancement is recommended. At subsequent visits, re-position the pivots or change from 10mm springs to 7mm springs for further mandibular advancement.



## CLASS III ARCHWIRE SET-UP EXAMPLE



## RESULTS MATTER

### Class III X-Rays

*Case photos compliments of  
Dr. Andy Hayes of St. Louis, MO*

**BEFORE**



**AFTER**



# SELF-LIGATING PIVOT

The SL pivot was years in the making and has been highly tested for strength and reliability. With the SL pivot, placing the CS™ system is faster than ever and will not require the removal of the archwire which greatly reduces patient chair time. Simply slide the door in the open position using our exclusive SL tool, place on the archwire, push the door to the closed position, place the spring, insert and tighten the screw. The SL pivot will be locked on the archwire and ready for spring activation.



## Exclusive CS™ SL Pivot and Tool



**Video Tutorials & Educational Animations**  
**Visit [www.dynaflex.com](http://www.dynaflex.com)**



**Dr. Jacqueline Demko**  
Demko Orthodontics



"My entire staff is absolutely in love with the CS™ SL Pivot! The unique design allows us to place immediately, without impacting chairtime - there is no need to remove and replace wires. They clip on securely right away! Ultimately, it is a HUGE time saver, both chairside and allowing treatment to progress as efficiently as possible with fewer visits."

# MAGNETIC ALLEN PENCIL

We are excited to introduce our new, brilliantly designed CS™ Allen Pencil! The new Allen Pencil has been designed and engineered to make placement of the CS™ system quicker and safer than ever before. The Allen Pencil is “charged” using an exclusive rare earth magnet. Once charged, it then uses magnetic forces to latch onto the screw. The screw is easily retrievable out of the kit and remains on the Allen Pencil for placement and tightening within the patient’s mouth.

## Magnet Instructions:

**STEP 1:** Slide the magnet onto the tip of the Allen Pencil to activate the magnetic force.

**STEP 2:** After 2-3 seconds, remove the magnet and set aside.

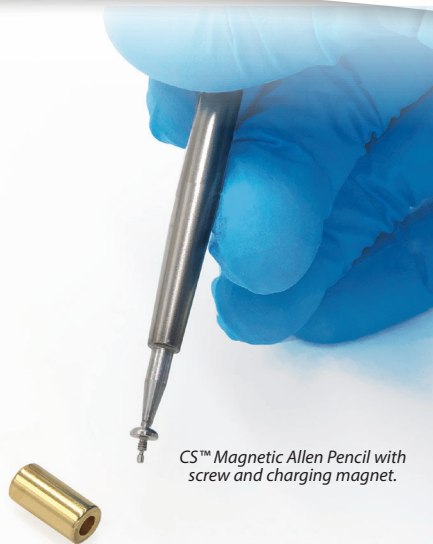
**STEP 3:** Proceed with CS™ System installation using magnetically charged Allen Pencil.

## Additional Notes:

- Magnet is cold sterilizable only.
- Allen Pencil is heat sterilizable only.
- Once the magnet and Allen Pencil are sterilized, the magnet can be stored engaged with the Allen Pencil.

## Important:

**Keep magnet away from electronics. Damage could occur.**



*CS™ Magnetic Allen Pencil with screw and charging magnet.*

# SELF-LIGATING PIVOT SETUP

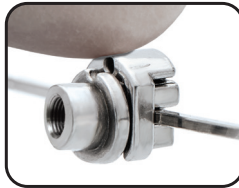
## STEP 1:

Using our exclusive SL tool, pull the door to the open position.



## STEP 2:

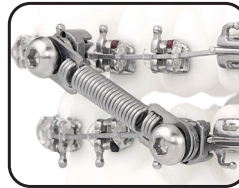
Place the SL pivot onto the archwire and the push door closed with index finger.



## STEP 3:

Place CS™4 spring onto pivot and secure in place with hybrid screw.

### CLASS II



### CLASS III



**\*\*The SL Pivot should be used on wire sizes from .016 x .025 up to .021 x .025**

### IMPORTANT NOTE:

Active screw must be used with SL pivot.

# USING THE HYBRID SCREW



**Active:** Simply insert the screw into pivot and tighten to lock into desired position on the archwire.



**Passive:** Simply cut off the tip of the hybrid screw with a hard wire cutter, allowing the pivot to move freely along archwire.



### ARCHWIRE SIZE NEEDED FOR LOCKING

Slot Size	.018	.022
Min. Lock Size	.016 x .022	.018 x .025
Max Lock Size	.018 x .025	.021 x .025



**\*When used in a passive position, the pivot will be free to slide and rotate on archwire.**

# TRADITIONAL PIVOT SETUP

## CLASS II

### STEP 1:

Place 2 pivots on the upper archwire, position pivots distal to the upper canines, insert and ligate archwire



### STEP 2:

Outside the mouth, assemble a spring, screw and pivot combination. Place assembled components onto the lower archwire. Insert and ligate archwire positioning the pivots mesial to the lower first molars



### STEP 3:

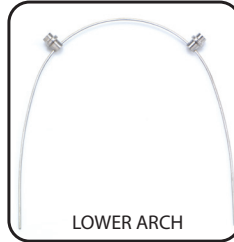
Using a hemostat, stretch spring eyelet onto the upper pivot and secure in place with a screw



## CLASS III

### STEP 1:

Place 2 pivots on the lower archwire, position pivots distal to the lower canines, insert and ligate archwire



### STEP 2:

Outside the mouth, assemble a spring, screw and pivot combination. Place assembled components onto the upper archwire. Insert and ligate archwire positioning the pivots mesial to the upper first molars



### STEP 3:

Using a hemostat, stretch spring eyelet onto the lower pivot and secure in place with a screw







# Simple, Effective, Proven

***Join the thousands of doctors worldwide that use the CS system and enjoy incredible results.***

"The CS™ System is an incredible new development in non-compliance therapy. The new spring provides a smoother, more consistent force, allowing for better treatment results and increased patient comfort."

**Dr. Michael Williams, DDS, MS | The Gulf Coast Center for Advanced Cosmetic Orthodontics**

## *Class II Treatment*

BEFORE



AFTER



## *Class III Treatment*

BEFORE



AFTER



5 PATIENT KIT			
TRADITIONAL PIVOT	.018 PIVOT	.022 PIVOT	
10mm Spring	#39-1810-5M	#39-2210-5M	
7mm Spring	#39-1807-5M	#39-2207-5M	
SELF-LIGATING PIVOT			
10mm Spring	#39-SL10-5M		
7mm Spring	#39-SL07-5M		
MASTER KIT	.018 PIVOT	.022 PIVOT	
Complete	#39M-018M	#39M-022M	
COMPONENTS	ITEM #		
CS™4 Niti Spring 10mm	#38094		
CS™4 Niti Spring 7mm	#38114		
Traditional Pivot .022 x .025	#3810-E		
Traditional Pivot .018 x .025	#3830-E		
Self-Ligating Pivot	#3810-SL		
Self-Ligating Tool	#3823-SL		
Hybrid Screw	#3815-5M		
Allen Pencil	#3823-EM		
Magnet	#3823-500		

"DynaFlex® CS™ is my appliance of choice for Class III correction. It's easy to place and compatible with all bracket systems. It's also easy on the patient. You get excellent, proven results in a short period of time. I am always amazed at how much Class III correction you can achieve in just a couple of visits."

**Dr. Katherine Friedman | Litchfield County Orthodontics**